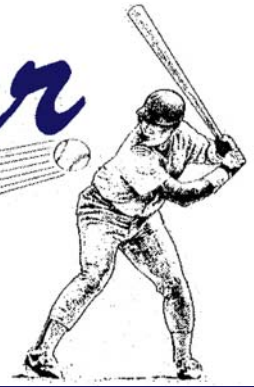




# The Messenger



November 2011 — Section 3

Official Publication of the Wisconsin Amateur Softball Association

2011 Wisconsin ASA Hall of Fame inductees pose with their plaques following the induction ceremony July 23 at Lakeside Park in Fond du Lac: (Front row, from left) Ken Walters, Phil Perlongo, (back row) Paul Wagner, Lew Smith, Tom Bonlander, Doran Geissler, Susan Schill, Terri A. Sheridan and 2010 Umpire of the Year award winner Jim Davidson.



## WASA inducts 8 into Hall of Fame

FOND DU LAC – Eight new members were ushered into the Wisconsin Amateur Softball Association Hall of Fame July 23 at Lakeside Park.

Comprising the WASA Hall of Fame Class of 2011’s “Elite Eight” are, in order of induction:

Tom Bonlander	Fond du Lac
Doran Geissler	Eau Claire
Phil Perlongo	Milwaukee
Susan Schill	Wisconsin Rapids
Terri A. Sheridan	Fond du Lac
Lew Smith	Green Bay
Paul Wagner	Fond du Lac/Green Bay
Ken Walters	Lake Mills

Also recognized at the ceremony were the WASA’s two most recent Umpire of the Year award winners, Tim Joly of Seymour for 2009, and Jim Davidson of Stevens Point/Plover for 2010.

The WASA Hall of Fame, which was founded in 1984, now has 118 members with the next induction scheduled for 2013 in Fond du Lac.

A potential ninth member of the Class of 2011, Pete Duesterbeck of Wild Rose, could not attend the ceremony and will be enshrined in 2013 instead.

The inductions ceremony at Lakeside Park was followed by a buffet dinner at Dillion’s in Fond du Lac; both events flawlessly organized by the WASA’s Tom Rausch and Paula Suemnicht.

A biographical sketch and photograph of each of the 2011 WASA Hall of Fame inductees follows, beginning on page 26.

## WASA Hall of Fame — Class of 2011

★ Stock in a great utility company can be extremely valuable to have. So can a great utility player in softball, and Tom Bonlander certainly fits that description.

★ An adroit athlete who could play anywhere in the field while normally hitting in the third spot for Dillinger's modified pitch monarchs from Fond du Lac.

★ Honored on nine ASA All-America teams out of 17 national appearances.

★ Member of Dillinger's trio of ASA national champions in 2002, 2003 and 2006.

★ Most Valuable Player of the 2003 ASA national tourney as Dillinger's annexed their second ASA title on their home diamond at Lakeside Park over city rival Cheers II.

★ Hit a scalding .842 for Dillinger's 2006 national titlists to walk away with the tourney's leading hitter trophy.

★ Played with 10 Wisconsin ASA state champions and was the 1993 WASA state tournament MVP as an outfielder. He's also been named to WASA All-State teams as a catcher, second baseman, designated player and, of course, utility man.

★ Called "the most versatile player in the modified game in America" by his Dillinger's skipper, Tom Rausch, who he joins in the WASA Hall of Fame.

★ Possesses the unique ability to switch gears and excel at slow pitch with equal prowess.



**Tom Bonlander**  
*Infield/Outfield*  
Fond du Lac

## WASA Hall of Fame — Class of 2011

Doran began his pitching career in Chippewa Falls at the age of 16 in 1946 and kept firing away until he hit 60 in 1990.

Here are some of the durable right-hander's most notable highlights from a career that touched portions of six decades:

★ Won 1,702 games while losing only 296.

★ Hurlled five perfect games and 58 no-hitters.

★ Member of Wisconsin ASA Men's Major Fast Pitch state championship teams with Eau Claire's Sammy's Pizza in 1969-70. In 1969 he went 13-0 with six shutouts and an ERA of 1.04 for Sammy's.

★ Member of four WASA state runners-up between 1961 and 1966.

★ WASA State Tournament MVP in 1966 at Rhinelander where he set a new record for wins, going 7-0, in leading Galloway Tap of Eau Claire to second place. He was also named the tourney's Outstanding Pitcher.

★ Captured WASA District Tournament Best Pitcher Awards in 1961, 1963, 1965 and 1966 while garnering district MVP honors in 1965 and 1966.

★ WASA All-State in 1956, 1959, 1961, 1965 and 1966.

★ Member of championship teams in the rugged Eau Claire Major League in 1965 thru 1967.

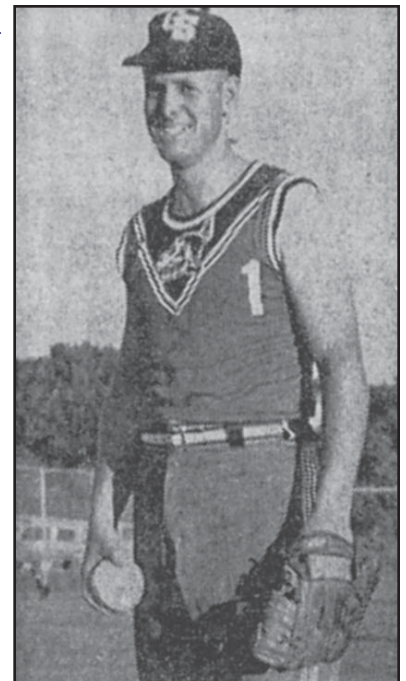
★ Eau Claire Major League ERA champ in 1962 and 1964.

★ Eau Claire Major League Best Pitcher and Best Record Award winner in 1959.

★ Fired a perfect game and a no-hitter in the 1965 WASA District tourney.

★ Once went 7½ years without a loss in Chippewa League play.

★ Pitched for 31 different Wisconsin teams during his career and also for a number of teams in Minnesota.



**Doran Geissler**  
*Pitcher*  
Eau Claire

## WASA Hall of Fame — Class of 2011

★ Phil's slow pitch softball career spanned from the mid-1940s to 1968.

★ "Perlongo was the preeminent pitcher of his era in Milwaukee," asserted Doug Robinson, a former president of that city's Big Eight Classic League, for years one of the most potent and competitive slow pitch leagues in the country. "He was not only a great pitcher, but was an excellent hitter as well."

★ Nicknamed "Iron Arm" by the *Milwaukee Journal* for once hurling three games in a row to secure the city title and a national tournament berth.

★ Won countless league and tournament championships throughout the 1950s and '60s, many with 5 & 10 Tap, a top-level ballclub out of Milwaukee, as well as with several other teams.

★ Highlight of his career came in 1957 at the ASA Men's Major Slow Pitch National Tournament in Toledo, Ohio when he hit .697 to pace all of the tourney's hitters. He also tossed 42 innings with seven fresh stitches on his pitching hand to propel 5 & 10 to a third-place finish.

★ He was named to the national all-tourney team in 1957 as well as in 1947, 1951 and 1963 as his team consistently placed in the final four at the ASA's consummate national slow pitch event.

★ Phil also played fast pitch and, in 1951, won the Milwaukee AA League's batting crown with a .417 average.



**Phil Perlongo**

*Pitcher*

**Milwaukee**

## WASA Hall of Fame — Class of 2011

★ A blur on the basepaths, this former track star at Wisconsin Rapids Assumption is also a trail blazer in Wisconsin ASA softball as she becomes the first player to enter the Hall of Fame primarily from the Slow Pitch Coed division of play.

★ Played from 1982 – 2003.

★ A five-time ASA All-America choice in Coed Major and Class A competition.

★ Female batting champion in the 1996 ASA Coed Major national for Beltone of Wisconsin Rapids with a .675 average.

★ Competed in 11 ASA nationals from 1993 through 2003 and her team finished in the top six five times and in the top 10 on eight occasions.

★ Named to four WASA Coed Class A All-State teams (1992, 1994, 1998 and 2001) and won Class A state titles in 2001 and 2002 with Marshfield's MetLife.

★ Could hit for both power and average. Her ability to use the entire field coupled with her speed produced many inside-the-park home runs to the opposite way, right field. She also hit a half-dozen over-the-fence bombs during league play at Mead Field in Wisconsin Rapids.

★ Picked to the Wisconsin Rapids' best women's league's all-star squad 20 out of 22 years, missing out twice only due to injuries.

★ In 1994 was a member of a perennial WASA Coed state champion Baggie's Bombers club from La Crosse that captured a National Invitational Tournament in Indianapolis.

★ Never played fast pitch in high school and jokes that everyone said that's why she was such a good slow pitch hitter ... she didn't have fast pitch to mess her up!



**Susan Schill**

*Infield/Outfield*

**Wisconsin Rapids**



## WASA Hall of Fame — Class of 2011

★ As a standout at an early age in the City of Fond du Lac playground leagues, Terri Sheridan was quickly noticed and recruited to join the ranks of competitive Fond du Lac area ASA Women's Softball.

★ Throughout the 1970s and into the mid-1980s, Terri was a permanent fixture playing left field for a number of Wisconsin ASA championship women's slow pitch teams that represented the Fond du Lac area.

★ Her athletic playing ability and dedication soon started winning her many awards. Each team she played for saw her batting average rise as she usually slotted in the lineup batting in the third through fifth spots.

★ Terri's hitting and defensive play in left field earned her All-Star, All-Tournament and Most Valuable Player status on a regular basis for many years at the local, state and national levels while playing with Fond du Lac area Dog N Suds, Beer Hut, Downtowners, Bernward Hall and Samantha's Women's teams.



**Terri A. Sheridan**

*Left Field*

Fond du Lac

## WASA Hall of Fame — Class of 2011

★ Lew, one of the most charismatic and popular umpires in Wisconsin ASA history, began umpiring in 1967 at the age of 16.

★ He entered military service in 1970 and played and umpired ASA Armed Forces and international fast pitch in Korea, Germany, Holland, Spain and Italy.

★ Upon discharge from the military in 1981 he returned to Green Bay and resumed his umpiring career with the WASA. He became a fixture at WASA fast pitch and modified pitch state tournaments for nearly three decades while also working WIAA and NCAA contests.

★ Honored as WASA Umpire of the Year in 2000.

★ Umpired in 14 ASA National Championships in Men's Fast Pitch, Men's Modified, Women's Fast Pitch and Junior Olympic Girls Fast Pitch.

★ Also worked numerous ASA JO National Qualifiers in Wisconsin and Illinois.

★ Served as the WASA's Northeast Section Umpire-in-Chief and has also conducted and assisted at scores of ASA clinics for umpires and coaches.

★ Currently provides clinics for middle school and high school umpires while mentoring Green Bay area youth umpires for the WASA.

★ Suffered a stroke in 2009, forcing him into inactive umpire status but he remains steadfast in his determination to keep contributing to the sport.

★ Prior to his Hall of Fame induction he stated, "I will continue to be actively involved and dedicated to serving with ASA softball as long as the Good Lord allows me.

"I've been blessed and honored to have been associated with all of the umpires I have worked with, the players and their families who participated in the game, and last but not least, the dedicated and knowledgeable spectator support who helped me with some of my calls at every game.

"Remember ... it's just a game, enjoy it!"



**Lew Smith**

*Umpire*

Green Bay

## WASA Hall of Fame — Class of 2011

- ★ Second to none in the realm of modified pitch softball as a second baseman.
- ★ Tom Rausch, Paul's manager throughout his career with mighty Dillinger's of Fond du Lac, considers him to be "the finest all-round second baseman to ever play the modified game in Wisconsin and on the national level."
- ★ One of the emotional leaders of Dillinger's three ASA national championship clubs in 2002, 2003 and 2006.
- ★ Named an ASA All-American seven times.
- ★ Most Valuable Player of the 2002 ASA Men's Modified 10-Man Class A event as Dillinger's rolled to its first national title in Cedar Rapids, Iowa.
- ★ "Wags" hit .600 with a homer, three doubles, nine RBIs and 10 runs scored while playing flawless ball in the field as Dillinger's swept five straight opponents.
- ★ Played for 10 WASA state champions from 1994 through 2004 and was the 1999 state tournament MVP.
- ★ His spectacular barehanded grab of a deflected shot behind second base and subsequent relay to first snuffed out a bases-loaded threat by Cheers II in the bottom of the sixth and basically clinched Dillinger's second ASA national title in an all-Fond du Lac final in 2003.
- ★ Middle man in a tourney-ending double play with Rusty Kryzanowski and Todd Bonlander in the 2002 national and turned nine double plays in 2007 as Dillinger's captured second in Georgia.
- ★ Still active as a player in 2011, the devout Yankees fan also contributes to Wisconsin softball as the WASA's vice president and modified pitch commissioner.



**Paul Wagner**  
*Second Base*  
Fond du Lac/Green Bay

## WASA Hall of Fame — Class of 2011

An energetic individual who has touched the lives of many, Ken joined the Wisconsin ASA family over 20 years ago by helping coach his daughter's Junior Olympic team in Milwaukee. From this modest beginning he's made a huge impact at the local and state levels. He has been the area's ASA JO Deputy District Commissioner for many years and his involvement and organization with area youth have been vital to the tremendous success of the WASA's JO girls fast pitch program.

In 1996 Ken established the WASA JO Windmill Fast Pitch program for girls in Lake Mills and adjoining communities. Known as the Windmill Travel League, the enterprise began with 48 players and now boasts in excess of 1,100 players on over 100 teams in Waukesha, Jefferson, Dane, Walworth, Columbia and Dodge counties.

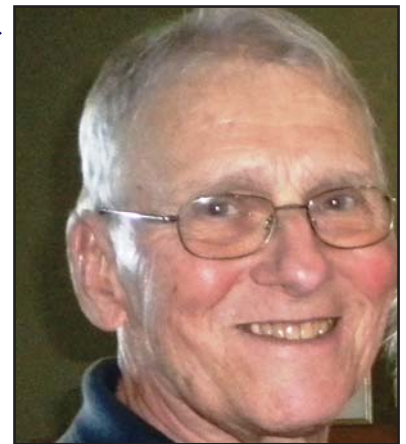
"Ken's league has increased in size every year and he's a major reason why Wisconsin ranked sixth in the USA in JO individual registrations in 2010 and seventh overall in team registrations," commented Dale Ferron, the WASA JO Commissioner. "He deserves enormous credit."

Ken also continues to work closely with the WASA to provide umpire clinics and ACE coaching schools.

Family plays an important role in the Windmill program as Walters, wife Pat, and daughter Barb have hosted an ASA JO tourney for Windmill participants each summer since 1998. This event began with only six teams but has grown as of 2010 to 70 teams with over 700 girls competing.

Ken and daughter Suzie started the Lakeside Lutheran High School girls fast pitch program in 1991. He was the Lakeside head coach in the 1990s, and then assisted at Wisconsin Lutheran while daughters Barb and Joanne attended college there. Ken is presently an assistant coach at Lakeside Lutheran and, with daughter Barb, coaches four age groups during the summer, which include several granddaughters.

Ken acknowledges the role Jesus has played in his life, and that with Him all things are possible. Ken is very thankful to be involved with the most influential individuals in young people's lives, the parents and coaches. He feels that any honor he achieves in ASA softball is due to the combined efforts of the community organizers that head up their local Windmill League programs.



**Ken Walters**  
*Deputy JO Commissioner/  
Coach/League Director*  
Lake Mills

# WISCONSIN ASA HALL OF FAME

## CLASSES 1984-2009

### 1984

James Ganther, Eau Claire  
 Bill Pecnick, Kenosha  
 Shirley Martin, Milwaukee  
 Jerry Proft, Melrose

### 1985

Don Creola, Pittsville  
 Helen Jaeger, Milwaukee  
 Ron (Gomer) Schroeder, La Crosse

### 1986

Carol Townsend, Milwaukee  
 Norm (Nummy) Derringer, Racine  
 Roger Regez, Eau Claire  
 \*Jim Chambers, Racine

### 1987

Don Amundson, Eau Claire  
 Ervin (Tex) Books, Eau Claire  
 Ron Buckli, Eau Claire  
 Katie Hamilton, Greenfield  
 Larry Barr, Eau Claire  
 George Gannon, Chippewa Falls  
 Dick Smith, Portage

### 1988

Rob Barnes, La Crosse  
 Dave Faschingbauer, Bloomer  
 Clarence (Swish) Beranek, La Crosse  
 Dennis Yeskie, Hixton  
 Don Kottke, Stevens Point  
 Milt Berman, Milwaukee  
 Mike Geary, La Crosse  
 Bill Brandt, La Crosse  
 John Salsman, Galesville  
 Richard White, Stevens Point  
 Bob Yeskie, Hixton

### 1989

Verna Tuschel, Manitowoc  
 Don Bentz, Pell Lake  
 Kelly Stevens, Menomonie  
 Dave Rasmussen, Menomonie  
 Fred Fels, Maribel  
 Lois Miller, Manitowoc  
 Rudy Suchomel, Sun Prairie  
 Bob Splan, Oneida  
 Robert (Tilly) Delaura, Wautoma  
 Jerry Lardinois, Green Bay

### 1990

Bob Moore, Beloit  
 Jill Wiedmann, Brown Deer  
 Ellen (Hornet) Tronnier, Palmyra  
 Earl Flamme, Racine  
 Jane Pamperin, Green Bay  
 Milton Held, Milwaukee  
 Dean Puccinelli, Milwaukee

### 1991

Bruce Weinkauff, Stevens Point  
 Jerald Fangmann, Milwaukee  
 Keith (Whitey) Steinagel, Mosinee  
 Al Thomas, Milwaukee  
 John Stone, Milwaukee  
 Leonard Ringle, Milwaukee

### 1992

Steve Firtko, Racine  
 Ray Keller, Madison  
 Phil Metzger, Milwaukee  
 Nelda (Rusty) Reese, Madison  
 Cecil Pittack, Madison

### 1993

JoAnn Polzin, Embarass  
 Harv Tomter, Eau Claire  
 Dick Huther, Medford  
 Louis Kittilstad, Eau Claire

### 1995

Phil Higgins, Milwaukee  
 John (Red) Rommelfanger, Kenosha  
 Gary (Sarge) Seidl, Green Bay  
 Ted Lahner, Eau Claire  
 Frank Markle, Fond du Lac/Waukesha

### 1997

Tom Blaken, Tomah  
 Doug Gardner, La Crosse  
 Allan Lundberg, Osseo  
 Bruce Stuhr, Galesville  
 \*Rick (Crusher) Scherr, Slinger

### 1999

Dan Adams, Melrose  
 Allen (Curly) Hanson, Eau Claire  
 Dave Holland, Marshfield  
 Aubrey T. Olson, Eau Claire  
 Willie Taylor, Madison  
 \*Dennis Graser, Waukesha

### 2001

Roy Berg, Green Bay  
 Richard Brodie, Janesville  
 Steve Frank, Chippewa Falls  
 Dennis Kostac, Green Bay  
 Bill Ryan, Pulaski

### 2003

Mike Disher, Stevens Point  
 Harry Kraft, Kenosha  
 \*Rod Peterson, Madison  
 Tom Raimer, Portage  
 Bud Smith, La Crosse  
 Larry (Kirby) Stuhr, Melrose

### 2005

John Becker, Holmen  
 Dale Ferron, Madison  
 Jeanine Kramer, Green Bay  
 Scott (Scooter) Marotz, Green Bay  
 Tom Rausch, Fond du Lac  
 Rick Weiterman, West Bend  
 Randy Wievel, Stevens Point

### 2007

Todd (Odie) Albrecht, Ripon  
 Judy Cmeyla, Green Bay  
 Denny Delorit, Green Bay  
 Mike Haley, Chippewa Falls  
 Silas G. Johnson, Madison/Mt. Horeb

### 2009

Harold (Nook) Blank, La Crosse  
 Todd Buetow, Fond du Lac  
 Harold (Hal) Case, Madison  
 Jo Ann (Paider) Krueger, Denmark  
 Rusty Kryzanowski, Fond du Lac  
 Jeff Moon, Eldorado  
 Lud Nordahl, Hixton  
 Jean Rivett, Green Bay  
 Bob Tomlinson, Poynette  
 Guy C. Wertz, Sr., Waukesha

\*=Member of National Softball Hall of Fame in Oklahoma City. Chambers inducted in 1966, Graser in 2000, Scherr in 2001 and Peterson in 2011.





**Tim Joly**  
—  
**2009 WASA  
Umpire of  
the Year**



**Jim Davidson**  
—  
**2010 WASA  
Umpire of  
the Year**

### WISCONSIN ASA UMPIRE OF THE YEAR

Year	Name	City	Year	Name	City
1982	Ken Gracner	Madison	1997	Lorn Roehm	Sparta
1983	Ed Johnson	La Crosse	1998	John Eckendorf	Stevens Point
1984	John Baltus	Eau Claire	1999	Pete Dake	Eau Claire
1985	Clyde Schuette	Green Bay	2000	Lew Smith	Green Bay
1986	George Gannon	Chippewa Falls	2001	Ron Deutsch	Eau Claire
1987	Arden Geisler	Wis. Rapids	2002	Tim Townsend	Greenfield
1988	Fred Kratz	Montello	2003	Bill Gongoll	Wausau
1989	John Peterson	Madison	2004	Mike Mikalsen	Cottage Grove
1990	Joe Hamilton	Eau Claire	2005	Tom Ueberroth	Hales Corners
1991	Tim Joly	Green Bay	2006	Bill Bartingale	Eau Claire
1992	Mike Lipp	Madison	2007	Richard Kummerow	Mosinee
1993	Joe Cyran	Stevens Point	2008	John Peterson	Madison
1994	Wes Templeton	Madison	2009	Tim Joly	Seymour
1995	Jim Mitchell	New Richmond	2010	Jim Davidson	Stevens Point/Plover
1996	Tim Irish	Onalaska	2011	Dan Cory	Brooklyn

### WISCONSIN ASA STATE COMMISSIONERS

1935-1942	.... Silas G. Johnson	1969-1970	.... William Oliver	1982-1995	.... Dave Markow
1943-1945	.... George M. Phelan	1973-1974	.... Walter Wombacher	1996-2011	.... Tom Raimer
1946-1950	.... George Driggett	1975-1979	.... Aubrey Olson		
1952-1968	.... Guy Wertz	1980-1981	.... Roger Regez		

### WISCONSIN ASA HALL OF FAME INDUCTIONS

Year	City	Year	City	Year	City
1984	.....Milwaukee	1991	.....Wausau	2003	.....Stevens Point
1985	.....Stevens Point	1992	.....Wisconsin Dells	2005	.....Fond du Lac
1986	.....Madison	1993	.....Stevens Point	2007	.....Ashwaubenon
1987	.....Eau Claire	1995	.....Stevens Point	2009	.....Fond du Lac
1988	.....La Crosse	1997	.....La Crosse	2011	.....Fond du Lac
1989	.....Green Bay	1999	.....Stevens Point		
1990	.....Milwaukee	2001	.....Marshfield		